

GLOBALLY MOBILE

HAVE YOU COVERED ALL YOUR PEOPLE RISKS?

Is your company expanding overseas but you need support with understanding the potential risks of sending employees overseas, the financial impact of these risks and the loss of reputation if things go wrong?

If the answer is yes, read on...

TOP RISKS

International People Mobility

- Medical and travel risk
- War risk and attacks
- Death and accident
- Kidnap and ransom
- Loss of salary
- Safety and wellbeing
- Natural disasters
- Reputational and brand risks
- Medical outbreak
- Private risks for expats

PEOPLE & RISK, FACTS & FIGURES:

- 70% of companies expect that Globally Mobile Employees will somewhat or significantly increase
- 8.0% medical inflation in 2020 (versus 7.8% in 2019 and 3.1% general inflation in 2019)
- 50% of travellers experience more stress when travelling
- 70% of companies expect that GMEs will somewhat or significantly increase
- Only 50% of companies track what a successful assignment looks like
- 30% of the population between 18 and 65 has experienced a mental health issue in the past 12 months
- 32% of the business travellers go to areas they don't know are safe
- Over 40% of employers are not sure whether the travellers know what to do in case of an incident
- Over 50% of the employers do not directly know whether colleagues are in a crisis area

Source:
 * Aon's 2020 Global Medical Trends Report
 ** Aon & Worldwide ERC Global Mobility survey
 *** International SOS Foundation

IMPORTANT QUESTIONS TO ASK YOURSELF

- DEMOGRAPHICS:** In how many countries are you located?
- STRATEGY:** Do you have a global mobility policy in place?
- DUTY OF CARE:** Do your globally mobile people know the procedures to follow in the case of an emergency or incident?
- COMPLIANCE:** Are your global programs compliant in all countries?
- COMMUNICATION:** Are your colleagues well informed around safe travelling?
- EXPATS:** Do you offer the best (insured) solutions and services for your long-term assignees?
- CONTROL:** Do you know where your colleagues are located at any time?

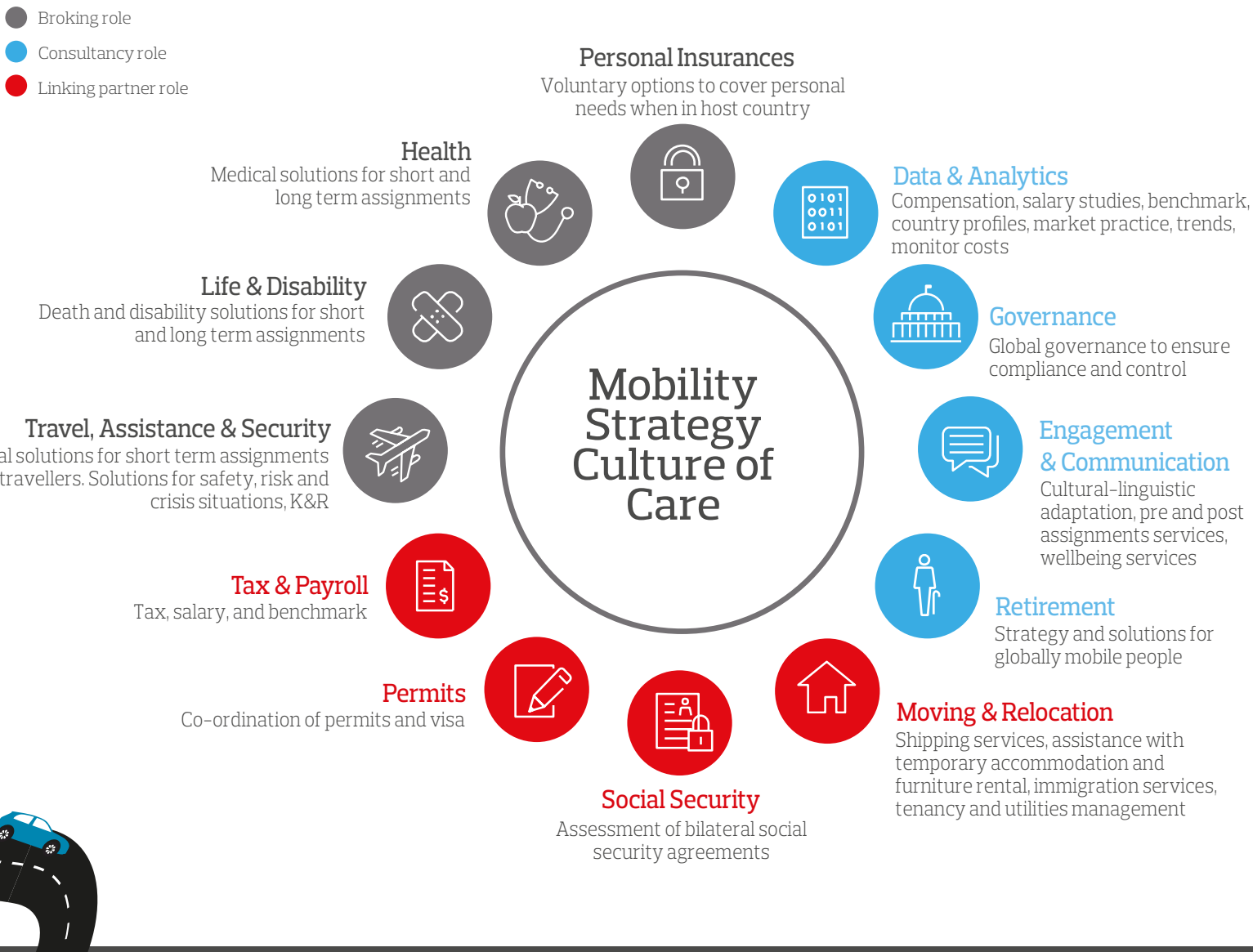
MEASURE THE EFFECTIVENESS OF YOUR CURRENT PLAN

Take 5 minutes to get a FREE snapshot of how your globally mobile program is performing and if there are any gaps, concerns or areas of improvement you should be considering!

Start your free diagnostics tool NOW!

AON'S 360° APPROACH

Mobility Strategy Culture of Care



WHY CONTACT US

Has the result of your diagnostic assessment shown potential risks and room for improvement in your current program?
 To support with mitigating those risks and advice on getting the most of your program feel free to contact us today.

- Maxime Manderlier** Belgium maxime.manderlier@aon.com
- Luca Morandi** Italy Luca.Morandi@aon.it
- Minna Toikka** Finland minna.toikka@aon.fi
- Joao Dias** Portugal joao.dias@aon.pt
- Thierry Lejeuz** France thierry.lejeuz@aon.com
- Javier Flores** Spain javier.flores.perez@aon.es
- Harald Gruber** Germany harald.gruber@aon.de
- Kilian Manz** Switzerland kilian.manz1@aon.ch
- Michel Teunisse** Netherlands Michel.teunisse@aon.nl
- Penny Pemberton** UK penelope.curry@aon.co.uk
- Jorgen Baade** Norway jorgen.baade@aon.no